



SSW Upsizing PRO! - Microsoft Upsizing Wizard Default Settings Report

Front End (Access):

C:\Program Files\SSW Upsizing PRO\Sample\1 SampleData2000 - Examples of Upsizing Issues.mdb

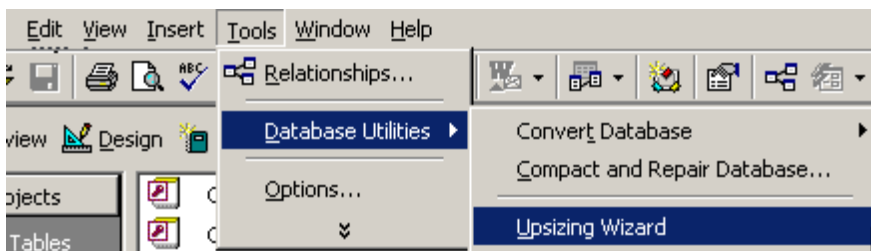
Version of Microsoft Upsizing Wizard: Access 2002 (recommended)

Version of Microsoft SQL Server: SQL Server 2000 (recommended)

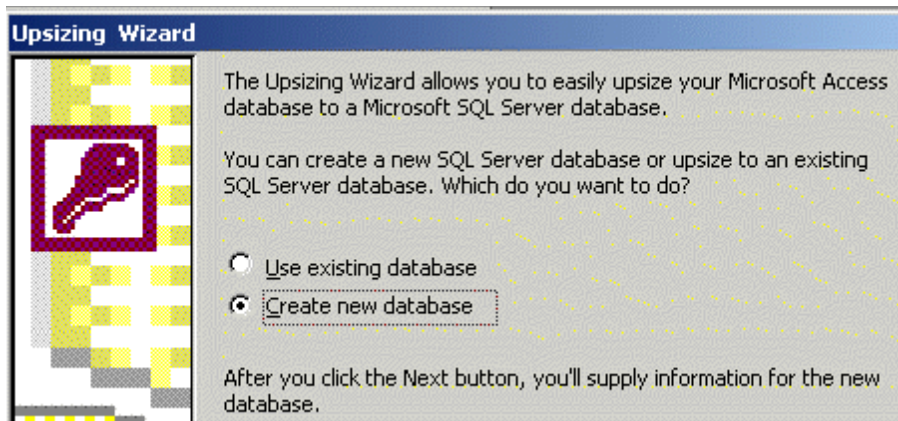
Details

Running the Microsoft Upsizing Wizard is the easy and exciting part.

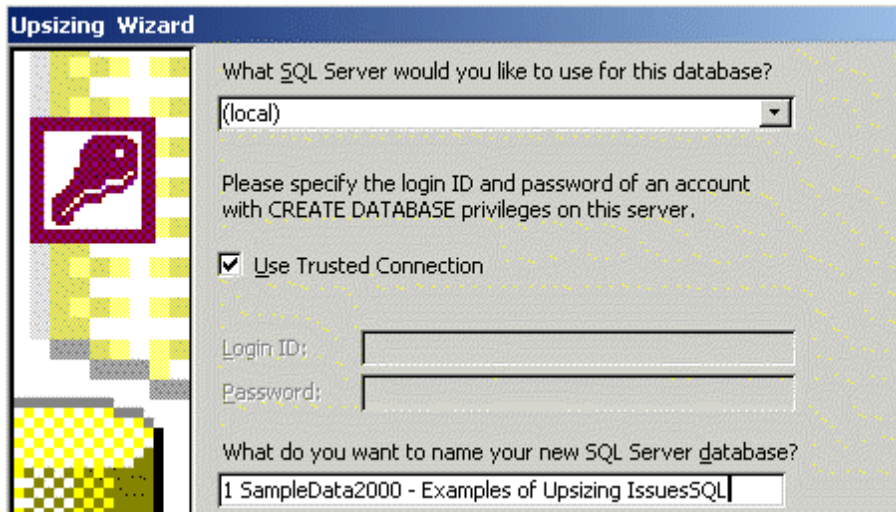
The Microsoft Upsizing Wizard default settings are in general acceptable. There are a few defaults we recommend against. We have highlighted our preferences with red circles in this document.



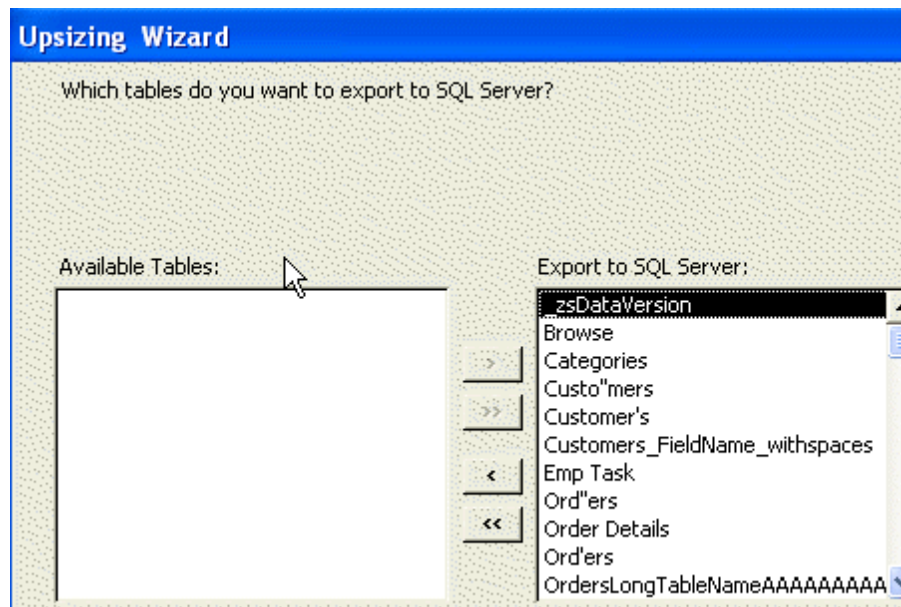
Step 1: Start Microsoft Upsizing Wizard



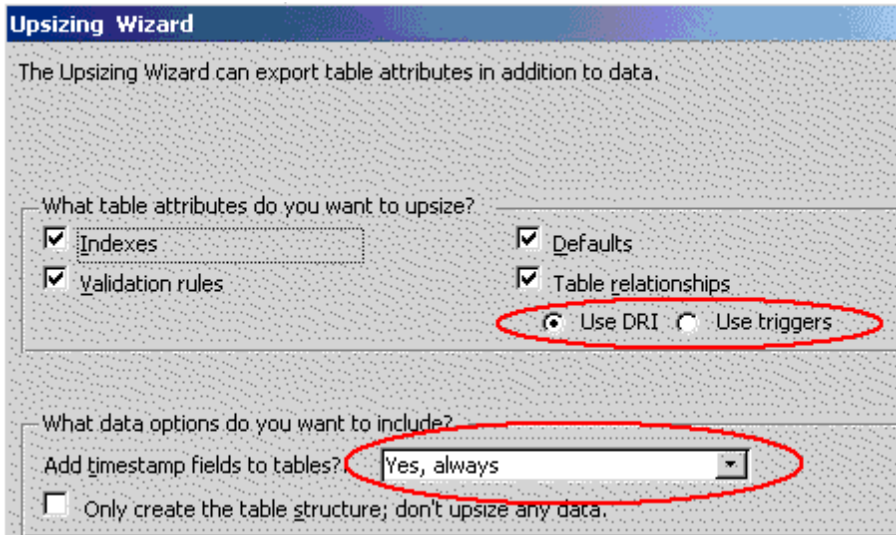
Step 2: Microsoft Upsizing Wizard



Step 3: Microsoft Upsizing Wizard



Step 4: Microsoft Upsizing Wizard



Step 5: Microsoft Upsizing Wizard

Note:

Choose DRI instead of triggers - Triggers the old (SQL 6.0, 6.5) way of doing things, but for SQL 7 and SQL 2000, DRI is the preferred and more maintainable method.

Choose Timestamps on all tables – it uses a little more disk space, but performance will always be slightly better.

TIP: Timestamps are a special field that will make your updates a little quicker in a multiuser situation. This because SQL Server does not need to compare all fields to see if someone else updated the record before you. The only downside is that they take more hard disk space HOWEVER NEVER ADD TIMESTAMPS IF YOU PLAN ON USING SQL SERVER REPLICATION. (Because you will just have to manually take them off again).